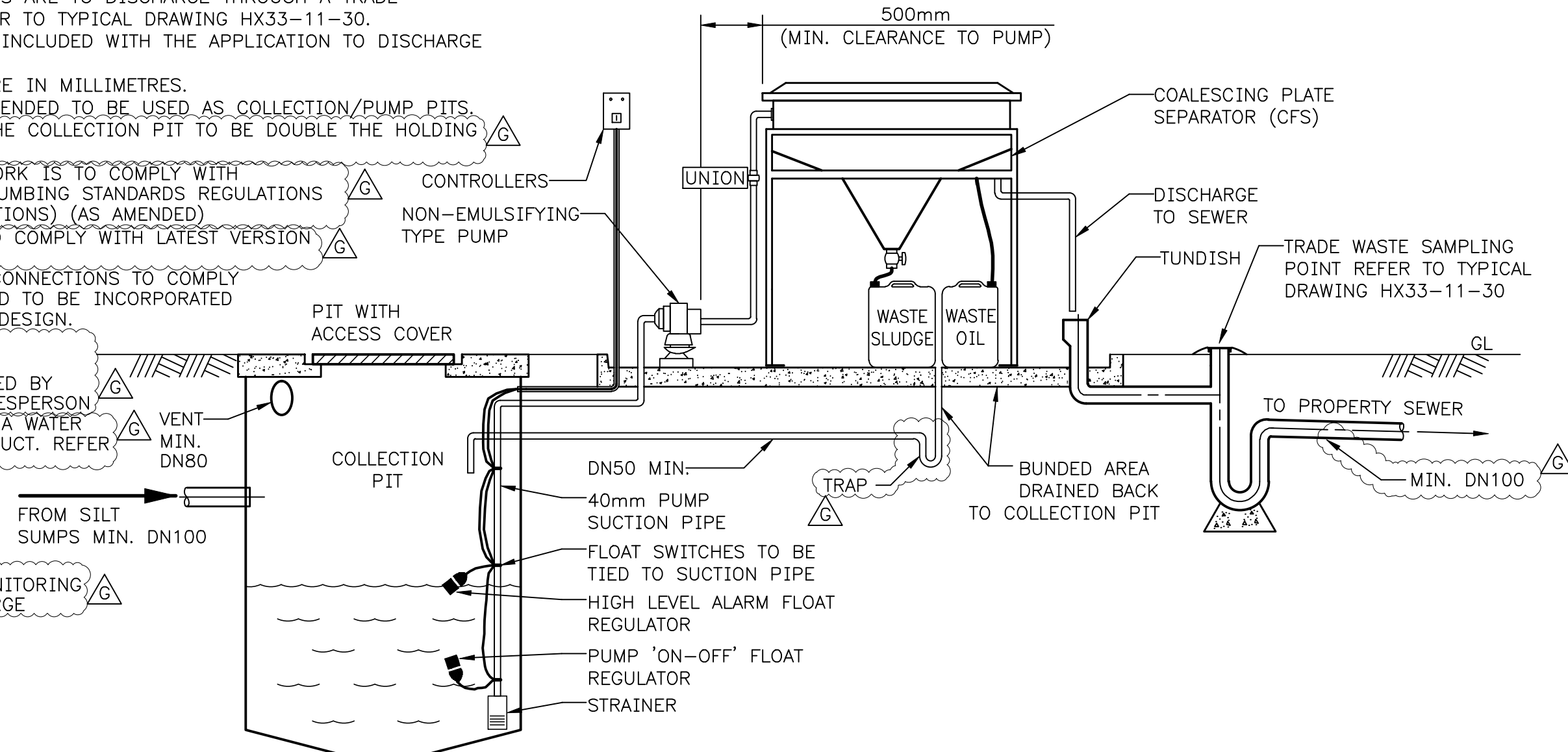


GUIDELINES

1. COALESCING PLATE SEPARATORS AND COLLECTION PIT TO BE SIZED ACCORDING TO RATE OF INFLOW. (REFER TO MANUFACTURERS SPECIFICATIONS)
2. ONLY NON EMULSIFYING TYPE PUMPS MAY BE USED WITH COALESCING PLATE SEPARATORS.
3. COALESCING PLATE SEPARATORS ARE TO DISCHARGE THROUGH A TRADE WASTE SAMPLING POINT, REFER TO TYPICAL DRAWING HX33-11-30.
4. MAINTENANCE DETAILS TO BE INCLUDED WITH THE APPLICATION TO DISCHARGE TRADE WASTE FORM.
5. ALL MEASUREMENTS SHOWN ARE IN MILLIMETRES.
6. SILT SUMPS ARE NOT RECOMMENDED TO BE USED AS COLLECTION/PUMP PITS.
7. THE MINIMUM CAPACITY OF THE COLLECTION PIT TO BE DOUBLE THE HOLDING CAPACITY OF THE SEPARATOR.
8. ALL ASSOCIATED PLUMBING WORK IS TO COMPLY WITH PLUMBERS LICENSING AND PLUMBING STANDARDS REGULATIONS 2000 (THE PLUMBING REGULATIONS) (AS AMENDED)
9. GAS TIGHT ACCESS COVERS TO COMPLY WITH LATEST VERSION OF AS 3996.
10. ALL ASSOCIATED ELECTRICAL CONNECTIONS TO COMPLY TO AUSTRALIAN STANDARDS AND TO BE INCORPORATED INTO ANY TREATMENT SYSTEM DESIGN.
11. IT IS THE BUSINESS OWNERS RESPONSIBILITY TO ENSURE ALL ELECTRICAL WORK IS CERTIFIED BY THE RELEVANT LICENSED TRADESPERSON
12. OIL WATER SEPARATOR TO BE A WATER CORPORATION APPROVED PRODUCT. REFER TO OUR WEBSITE FOR APPROVED PRODUCTS
13. TRADE WASTE SAMPLING POINT DESIGN, LOCATION AND ACCESSIBILITY MUST NOT CONSTITUTE A HEALTH AND SAFETY RISK IN THE MONITORING OF ANY TRADE WASTE DISCHARGE

FOR MORE INFORMATION REFER TO OUR WEBSITE watercorporation.com.au/tradewaste



ISSUE	DATE	GRID	REVISION	DRN	REC	APPD
G	05/2024		NOTES 12 AND 13 ADDED, NOTE 7 AND 11 UPDATED, TRAP ADDED TO BUNDED AREA DRAIN ILLUSTRATION	JD	MT	MS
F	12/2017		PUMP AND CONTROLLER ARRANGEMENT AMENDED, NOTES 10 & 11 ADDED	BJ	SJ	SJ
E	07/2016		WEBSITE DETAILS ADDED, GUIDELINES AMENDED	BJ	SJ	MS
D	03/2014		WASTE SLUDGE ADDED AND ALL REFERENCES TO 'INDUSTRIAL WASTE' REPLACED WITH 'TRADE WASTE'	AC	PR	MS
C	06/2009		BUNDED AREA INCREASED, BUNDED AREA TEXT MODIFIED, NOTE 6,7 & 8 ADDED	RY	GC	AM
B	12/2005		TEE REMOVED	KLM	AM	VM

SCALE: DIAGRAMMATIC

DES CALC	RECOMMENDED	25/03/2014		WATER CORPORATION TYPICAL DRAWINGS FOR TRADE WASTE COALESCING PLATE SEPARATOR (CPS) FORMERLY TYPICAL DRAWING 1210			ORIGINAL SHEET SIZE			
DES CHD	P. RANASINGHE (SIGNED)						A3			
DRN K MCGREGOR	SUPERVISOR ASSESSMENT									
Q.C. CHD G CLEAVER	APPROVED	25/03/2014	M. STARK (SIGNED)			FILE	PLAN	CAD	ISSUE	G
	MANAGER, TRADE WASTES					PROJECT	HX33-12-10		MF	