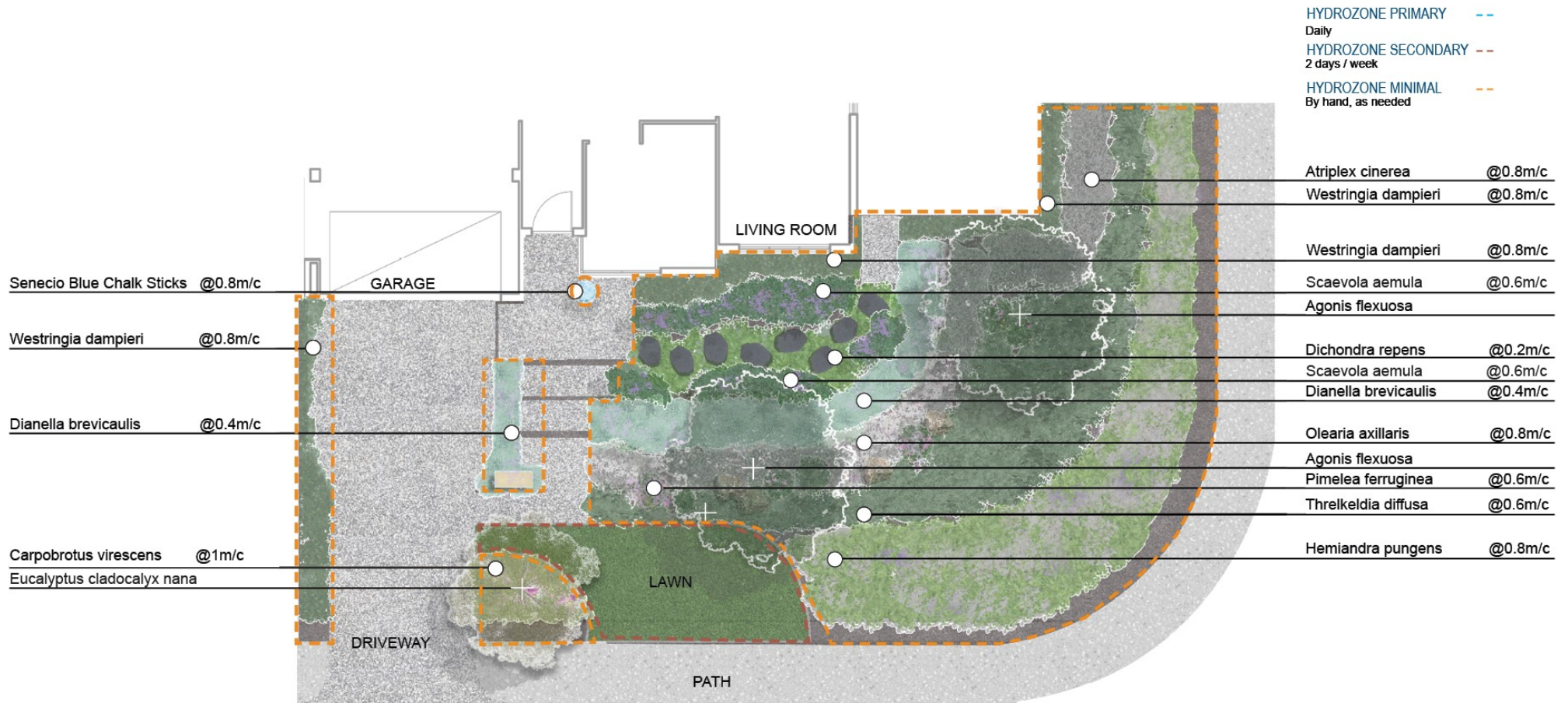


Perth & South West Coastal Garden Design



Note: m/c refers to the planting density ie 0.6m/c - leave 0.6 metre space between the centre stem of each of plant

Perth & South West Coastal Garden Design

SUPPLIES	PLANT DIRECTORY		
<p><i>Likely soil type:</i> Sandy soil and gravels</p> <p><i>Soil amendments:</i></p> <ul style="list-style-type: none"> Organic compost Bentonite clay for sandy soil Soil wetting agent <p><i>Supplies you'll need to create this garden design:</i></p> <ul style="list-style-type: none"> Seeds/plants Stakes Organic Waterwise mulch Turf Edging to delineate turf and garden beds Feature pot Bluestone stepping stones Slow-release fertiliser suitable natives 	<i>Botanical name</i>	<i>Common name</i>	<i>Planting density</i>
	Trees		
	Eucalyptus cladocalyx nana	Dwarf Sugar Gum	
	Agonis flexuosa	West Australian Weeping Peppermint	
	Accent plants		
	Senecio Blue Chalk Sticks	Blue Chalk Sticks	0.8 m/c
	High shrubs/Hedges		
	Westringia dampieri	Shore Westringia	0.8m/c
	Medium shrubs		
	Atriplex cinerea Poir.	Grey Saltbush	0.8m/c
	Pimelea ferruginea Labill.	Pink Rice Flower	0.6m/c
	Olearia axillaris	Coastal Daisy Bush	0.8m/c
	Dianella brevicaulis	Coast Flax-lily	0.4m/c
	Scaevola aemula	Fairy Fan-flower	0.6m/c
Groundcovers			
Carpobrotus Virescens	Pig Face	1.0m/c	

Perth & South West Coastal Garden Design

	Dichodra repens	Kidney Plant	0.2m/c
	Threlkeldia diffusa	Coast Bonefruit	0.6m/c
	Hemiandra pungens	Snake Bush	0.8m/c